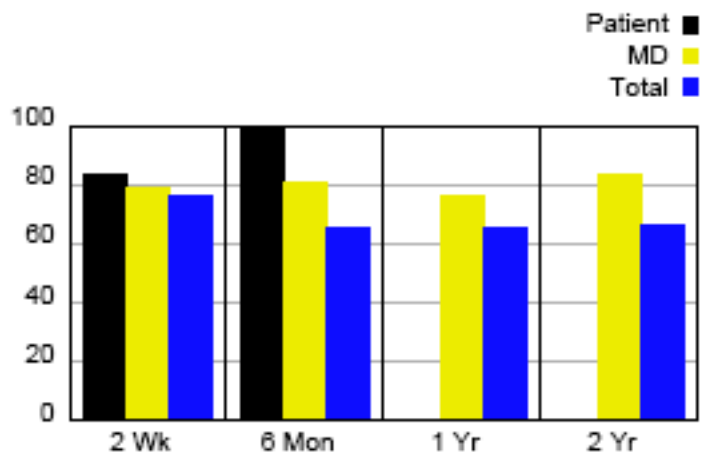


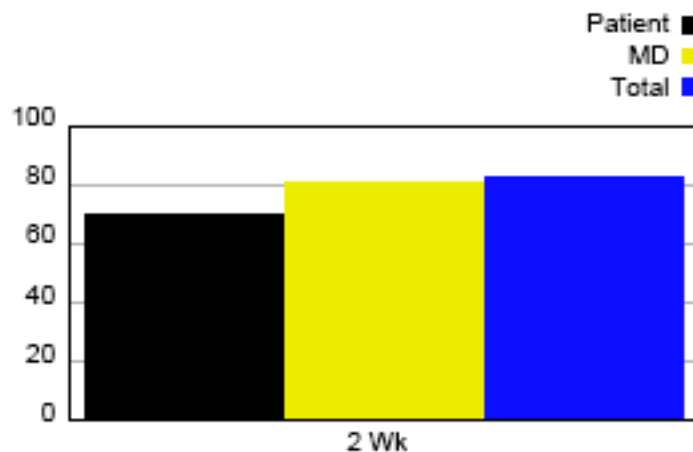
**Surgery Type:** Surgery Date: 2/17/2005  
**Surgery Type:** Discectomy Fusion Surgery Date: 2/17/2005  
 Total (total number of patients included in comparison) = 1905  
 MD (total number of MDs patients included in comparison) = 100  
 Patients who have had surgery are included in comparison.

**Patient Satisfaction With Results <sup>1</sup>**



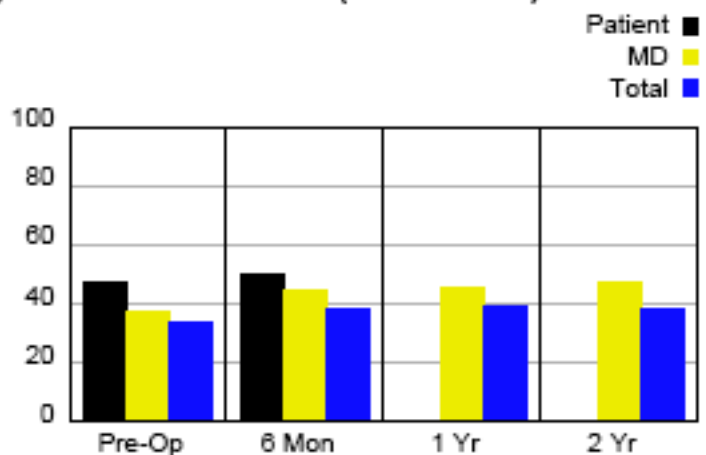
	2 Wks		6 Mon		1 Yr		2 Yr	
Patient	83.3	2	100.0	2	0.0	0	0.0	0
MD	78.9	80	80.3	106	75.8	100	83.8	72
Total	78.3	897	65.6	1611	65.0	1390	66.3	891

**Patient Satisfaction With Services <sup>2</sup>**



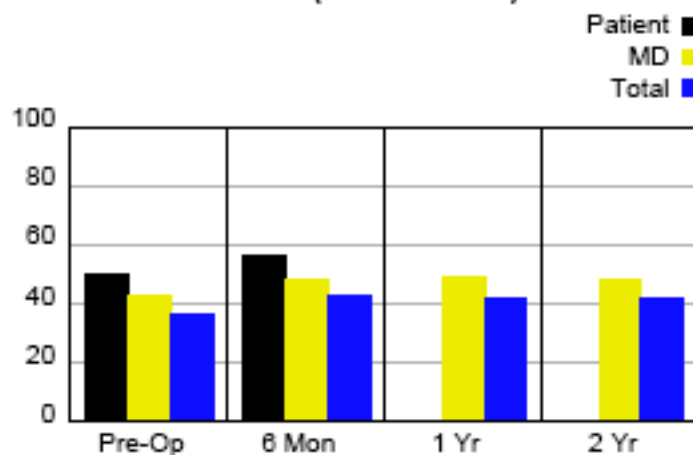
	2 Wks	
Patient	69.4	2
MD	80.6	80
Total	82.3	900

**Physical Functional Status (SF-36v2 PCS) <sup>3</sup>**



	Pre-Op		6 Mon		1 Yr		2 Yr	
Patient	47.5	4	50.1	4	0.0	0	0.0	0
MD	37.0	393	44.5	216	45.8	188	47.8	144
Total	34.0	4765	38.3	2748	38.7	2319	38.4	1639

**Mental Functional Status (SF-36v2 MCS) <sup>3</sup>**



	Pre-Op		6 Mon		1 Yr		2 Yr	
Patient	49.9	4	58.8	4	0.0	0	0.0	0
MD	43.2	393	48.4	216	49.3	188	48.2	144
Total	36.6	4765	42.5	2748	42.3	2319	42.2	1639

<sup>1</sup> Answers are scored on a scale from 0 to 100. 100 = Definitely true, 75 = Mostly true, 50 = Don't know, 25 = Mostly false, 0 = Definitely false.

<sup>2</sup> Answers are scored on a scale from 0 to 100 with 0 being 'Poor' and 100 being 'Excellent'.

<sup>3</sup> All scores are standardized to have a mean = 50 and a stddev = 10 in the general US population (Ware et al, 1998).

Enrollments: active, inactive, complete, incomplete, most recent